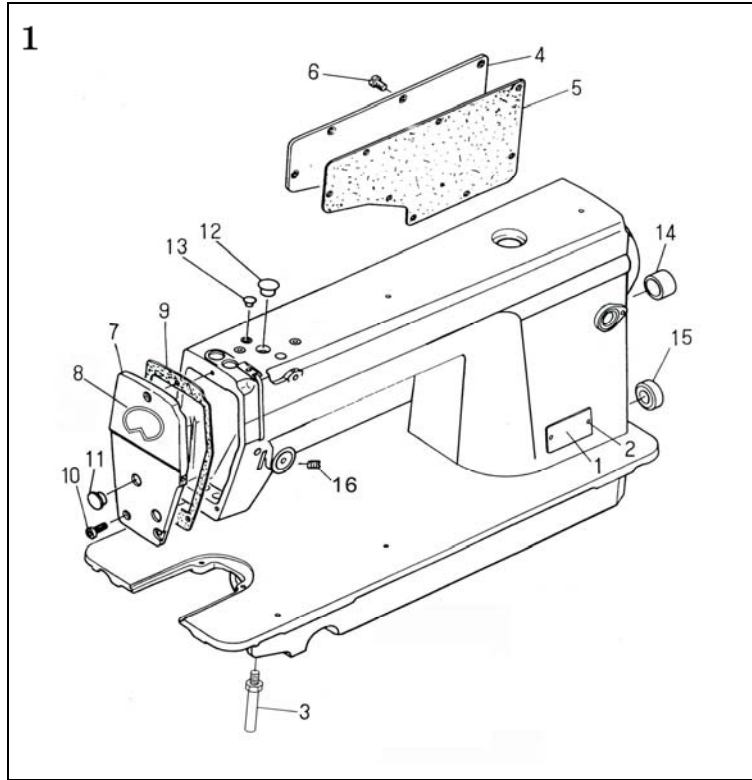


# JACK

## Ordinary lockstitch and JK-9100B Parts book

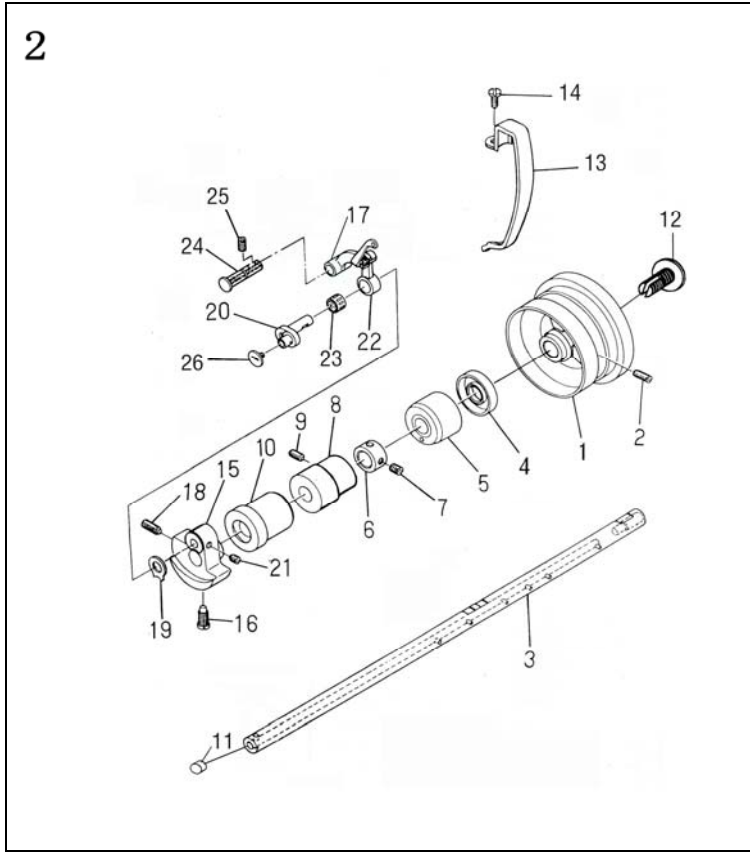


1. 机壳外装部件/Arm bed components

序号NO.	图号Part No.	名称Part Name	Description	件数Num.	
				M	H
1	10137001	型号牌	Model plate	1	1
2	R03001	型号牌铆钉	Model plate rivet	2	2
3	101S12001	底板支柱	Bed screw stud	4	4
4	300088	JK-5550/8500后窗板	Side plate	1	1
	300096	JK-8900后窗板	Side plate	1	1
	300097	JK-8800/608/609/6090后窗板	Side plate	1	1
5	10122001	JK-5550/8500后窗板垫	Gasket	1	1
	10422001	JK-8900后窗板垫	Gasket	1	1
	10322001	JK-8800/608/609/6090后窗板垫	Gasket	1	1
6	101S11001	螺钉SM3/16"×28 L=9	Screw SM3/16"×28 L=9	8	8
7	301741	JK-8800/608/609/6090面板	Face plate arm	1	1
	300207	JK-5550/8500面板	Face plate arm	1	1
	300558	JK-8900面板	Face plate arm	1	1
8	10137002	商标牌	Plate with trademark	1	1
9	10122098	JK-8800/608/609/6090面板	Gasket	1	1
	10222001	JK-5550/8500面板垫	Gasket	1	1
	10422002	JK-8900面板垫	Gasket	1	1
10	101S11001	螺钉SM3/16"×28 L=9	Screw SM3/16"×28 L=9	3	3
11	10122003	面板调节螺孔塞	Rubber plug	2	2
12	10122004	针杆曲柄螺孔塞	Rubber plug	1	1
13	10122005	挑线连杆销螺孔塞	Rubber plug	1	1
14	10122006	送料调节器孔塞	Rubber plug	1	1
15	10122007	下轴工艺孔塞	Rubber plug	1	1
16	101S15006	螺钉SM15/64"×28 L=7	Screw SM15/64"×28 L=7	1	1

# JACK

## Ordinary lockstitch and JK-9100B Parts book

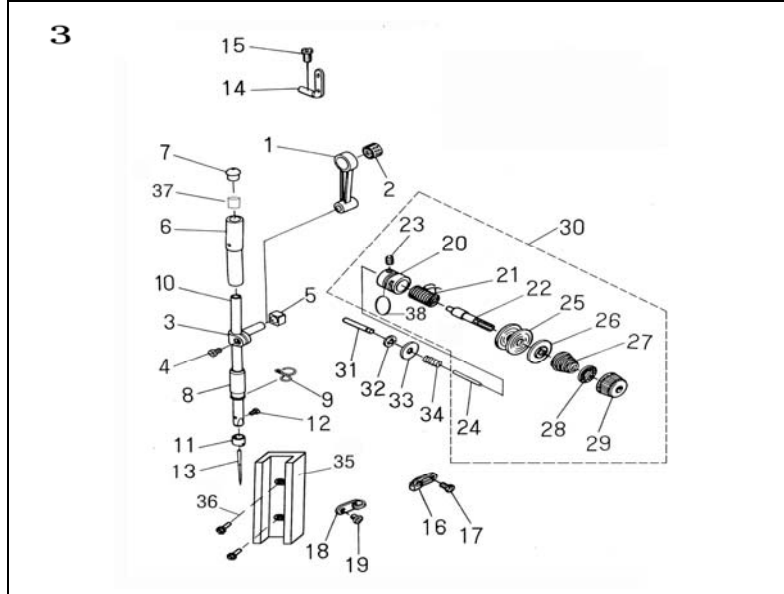


2. 上轴、挑线分组件/Main shaft, take-up components

序号No.	图号Part No.	名称Part Name	Description	件数Num.	
				M	H
1	300092	上轮	Hand wheel	1	1
	300453	608/609上轮	Hand wheel	1	1
2	101S15001	螺钉SM15/64"×28 L=15	Screw SM15/64"×28 L=15	2	2
	10102001	上轴	Main shaft	1	1
3	10102022	迅利1B上轴	Main shaft	1	1
	10122008	上轴油封	Main shaft	1	1
4	10103001	上轴后轴套	Main shaft bushing, rear	1	1
	10108001	上轴挡圈	Thrust collar asm.	1	1
5	101S15007	螺钉SM1/4"×40 L=8	Screw SM1/4"×40 L=8	2	2
	10403002	上轴中轴套	Brushing, intermediate	1	1
6	12203002	迅利1B上轴中轴套	Brushing, intermediate	1	1
	101S15006	螺钉SM15/64"×28 L=7	Screw SM15/64"×28 L=7	1	1
7	1010300400	上轴前轴套分部件	Main shaft bushing front asm	1	1
	10122012	上轴孔塞	Rubber plug	1	1
8	101S30001	螺钉SM5/16"×24 L=14	Screw SM5/16"×24 L=14	1	1
	300095	挑线杆护罩	Thread takeup lever cover	1	1
9	300611	608/609挑线杆护罩	Thread takeup lever cover	1	1
	101S11004	螺钉SM3/16"×28 L=7	Screw SM3/16"×28 L=7	1	1
10	10104001	针杆曲柄	Counterweight	1	1
	11404035	608/609针杆曲柄	Counterweight	1	1
11	101S11003	螺钉SM9/32"×28 L=16	Screw SM9/32"×28 L=16	1	1
	10105001	挑线连杆	Thread takeup lever	1	1
12	101S15004	螺钉SM9/32"×28 L=16	Screw SM9/32"×28 L=16	1	1
	10112003	针杆曲柄护板	Counterweight protecting plate	1	1
13	1011000100	挑线曲柄分部件	Needle bar crank asm.	1	1
	1011000400	608/609挑线曲柄分部件	Needle bar crank asm.	1	1
14	101S15002	螺钉SM1/4"×40 L=6	Screw SM1/4"×40 L=6	2	2
	1013800100	挑线杆分组件	Thread takeup lever asm	1	1
15	1133800200	挑线杆分组件	Thread takeup lever asm	1	1
	1223800300	608/609挑线杆分组件	Thread takeup lever asm	1	1
16	10124001	挑线杆滚针轴承	Needle bearing	1	1
	10126001	挑线连杆销	Thread takeup crank shaft	1	1
17	101S15001	螺钉SM15/64"×28 L=15	Screw SM15/64"×28 L=15	1	1
	101S17001	螺钉SM9/64"×40 L=6	Screw SM9/64"×40 L=6	1	1

# JACK

## Ordinary lockstitch and JK-9100B Parts book

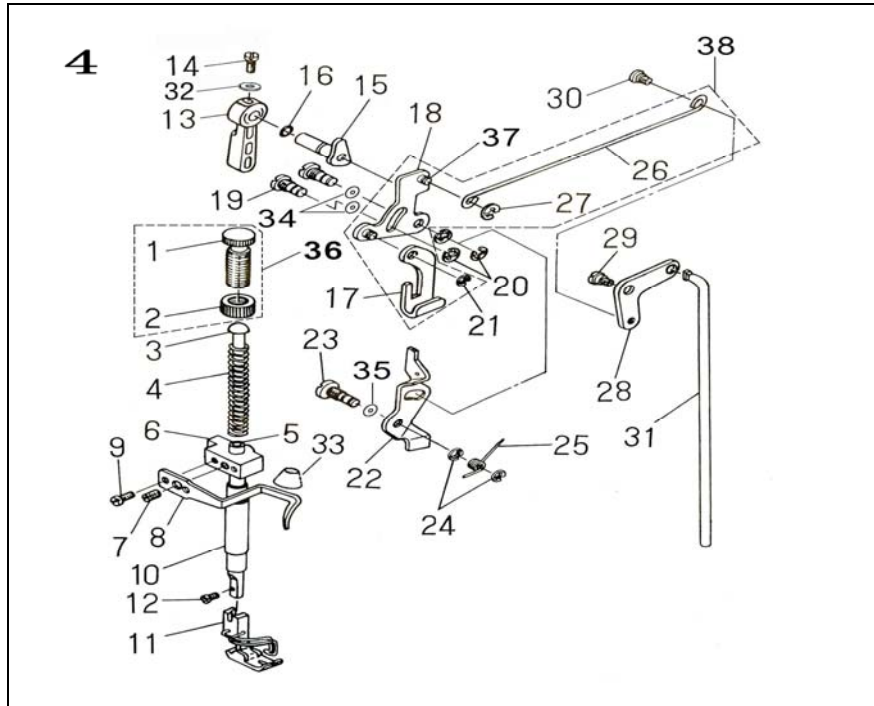


3. 针杆、夹线分组/Needle bar, thread tension components

序号No.	图号Part No.	名称Part Name	Description	件数Num.	
				M	H
1	10105002	针杆连杆	Needle bar crank rod	1	1
2	10124001	挑线杆滚针轴承	Needle bearing	1	1
3	10138002	针杆连接柱	Needle bar connection asm.	1	1
4	101S11005	螺钉SM9/64"×40 L=6	Screw SM9/64"×40 L=6	1	1
5	10109001	针杆连接柱滑块	Slide block	1	1
6	10103009	针杆上衬套	Needle bar bushing, upper	1	1
7	10122013	针杆上衬套孔塞	Cap	1	1
8	10103010	针杆下衬套	Needle bar bushing, lower	1	1
	10103023	608/609针杆下衬套	Needle bar bushing, lower		1
9	10413001	针杆下衬套线勾	Needle bar thread guide	1	1
	10113009	608/609针杆下衬套线钩	Needle bar thread guide		1
10	10102002	针杆	Needle bar	1	1
	10102012	608/609针杆	Needle bar		1
11	10113002	针杆线勾	Needle bar thread guide	1	1
	10113009	608/609针杆线勾	Needle bar thread guide		1
12	101S11006	螺钉SM1/8"×44 L=4.5	Screw SM1/8"×44 L=4.5	1	1
13	10117001	机针 (14#)	Needle	1	1
	10117002	机针 (#21)	Needle		1
14	10113003	二眼线勾	Twohole thread eyelet	1	1
15	101S11004	螺钉SM3/16"×28 L=7	Screw SM3/16"×28 L=7	1	1
16	10113004	右线勾	Frsmc thread guide, right	1	1
17	101S11007	螺钉SM11/64"×40 L=6	Screw SM11/64"×40 L=6	1	1
18	10113005	左线勾	Frsmc thread guide, left	1	1
19	101S11007	螺钉SM11/64"×40 L=6	Screw SM11/64"×40 L=6	1	1
20	10103011	挑线调节插座	Tension post socket	1	1
21	10127001	挑线簧	Takeup spring	1	1
22	101S30002	螺钉SM1/4"×40 L=17.5	Screw SM1/4"×40 L=17.5	1	1
23	101S15005	螺钉SM9/64"×40 L=5.5	Screw SM9/64"×40 L=5.5	1	1
24	10126002	松线钉	Thread release pin	1	1
25	480001	夹线板 (表面处理后)	Tension disc	2	2
26	10112006	松线板	Tension disc holder	1	1
27	10127020	夹线簧 (细)	Tension spring	1	1
28	10112007	夹线制动板	Tension disc stopper	1	1
29	112S13002	夹线螺母SM1/4"×40 L=10	Tension nut SM1/4"×40 L=10	1	1
	400001	夹线器组件	Thread tension asm	1	1
	400144	夹线器组件 (粗)	Thread tension asm		1
	400507	8800/6090夹线器组件	Thread tension asm	1	1
	400527	608/609夹线器组件 (粗)	Thread tension asm		1
31	10126003	松线辅助钉	Tension release supporting pin	1	1
	11426020	迅利1B松线辅助钉	Tension release supporting pin	1	1
32	H05012	松线辅助钉挡圈	Snap ring	1	1
33	10128001	松线辅助钉垫片	Washer plate	1	1
34	10127003	松线辅助钉弹簧	Tension release pin spring	1	1
35	10109002	针杆接头滑块导轨	Needle bar trough	1	1
36	101S11008	螺钉SM11/64"×40 L=8	Screw SM11/64"×40 L=8	2	2
37	10123002	针杆上毡塞	Oil felt for needle bar	1	1
38	10122014	O形圈	Rubber ring	1	1

# JACK

## Ordinary lockstitch and JK-9100B Parts book

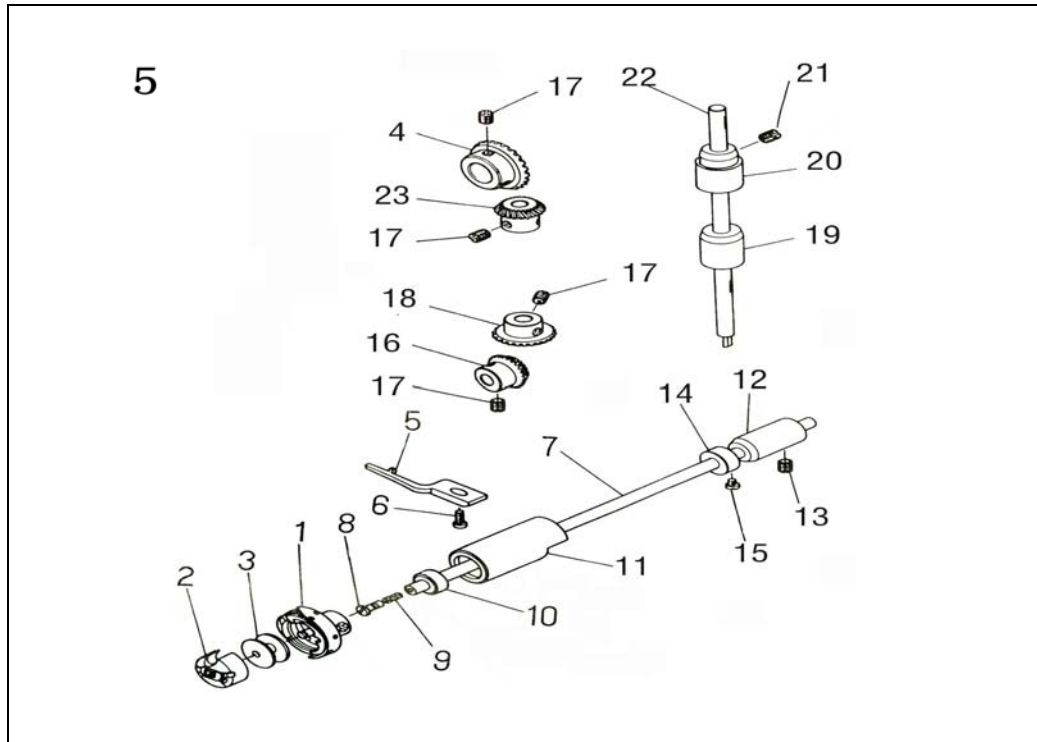


4. 压料分组件/Presser bar components

序号No.	图号Part No.	名称Part Name	Description	件数Num.	
				M	H
1	10111034	调压螺钉SM1/2"×28 L=47	Presser spring regulator SM1/2"×28 L=47	1	1
2	10111036	调压螺母SM1/2"×28 L=8	Nut SM1/2"×28 L=8	1	1
3	10102003	调压导杆	Presser guide bar	1	1
	10127005	调压簧	Presser spring	1	
4	10127023	迅利IB调压簧	Presser spring	1	
	11427033	调压簧	Presser spring		1
5	10102004	压杆	Presser bar	1	1
6	10409001	压杆导架	Needle bar guide bracket	1	1
7	101S15007	螺钉SM1/4"×40 L=8	Screw SM1/4"×40 L=8	1	1
8	10413003	缓线调节钩	Presser bar thread guide	1	1
	11413005	迅利IB缓线调节钩	Presser bar thread guide	1	1
9	101S11005	螺钉SM9/64"×40 L=6	Screw SM9/64"×40 L=6	2	2
10	10103012	压杆衬套	Presser bar bushing lower	1	1
11	1011600100	压脚(部件)	presser foot asm	1	
	1011600400	活压脚板部件	presser foot asm		1
12	101S11009	螺钉SM9/64"×40 L=10.5	Screw SM9/64"×40 L=10.5	1	1
13	10111028	压脚扳手	Hand lifter	1	1
14	101S11010	螺钉SM9/64"×40 L=11	Screw SM9/64"×40 L=11	1	1
15	1011000200	压脚扳手凸轮组件	Hand lifter cam asm.	1	1
	1011000500	609压脚扳手凸轮组件	Hand lifter cam asm.		1
16	001004	GB/T3452.1-1992 O型圈 4×	Rubber ring	1	1
17	10112010	压脚升降板	Lifting lever	1	1
18	10112011	抬压脚前杆	Hand lifter link	1	1
19	101S20001	前杆杆螺纹销SM5/16"×24	Link shaft SM5/16"×24 L=5.5	2	2
20	H05003	螺钉销开口挡圈	Snap ring	3	3
21	H05003	升降板连接特制开口挡圈	Lifting lever ring	1	1
22	10112012	松线顶板	Tension release plate	1	1
23	101S20002	松线顶板螺纹销SM5/16"×24	Tension release shaft SM5/16"×24 L=5.5	1	1
24	H05003	螺钉销开口挡圈	Snap ring	2	2
25	10127008	松线顶板复位簧	Tension release return spring	1	1
26	10112013	抬压脚拉杆	Lifting lever connecting rod	1	1
27	H05003	拉杆开口挡圈	Snap ring	1	1
28	10112014	抬压脚后杆	Lifting lever link	1	1
29	101S20003	后杆杆轴位螺钉SM15/64"×28 L=6.4	Hinge screw SM15/64"×28 L=6.4	1	1
30	101S20004	抬压脚拉杆螺钉SM3/16"×32 L=5	Hinge screw SM3/16"×32 L=5	1	1
31	10112015	抬压脚顶杆	Connecting rod vertical	1	1
32	10128002	垫圈	Washer	1	1
33	30122022	压脚轴碟形密封圈	Presser bar defend oil bushing	1	1
34	10128015	螺纹销橡胶垫圈(厚)	Washer	2	2
35	10128016	螺纹销橡胶垫圈(薄)	Washer	1	1
	1011102400	调压螺钉组件	Presser spring regulator asm	1	1
	10111027	迅利IB/8800/608/609/6090	Presser spring regulator asm	1	1
37	10126005	抬压脚杆轴	Presser foot lifting lever shaft	2	2
38	1011200100	抬压脚前杆组件	Hand lifter link asm	1	1

# JACK

## Ordinary lockstitch and JK-9100B Parts book

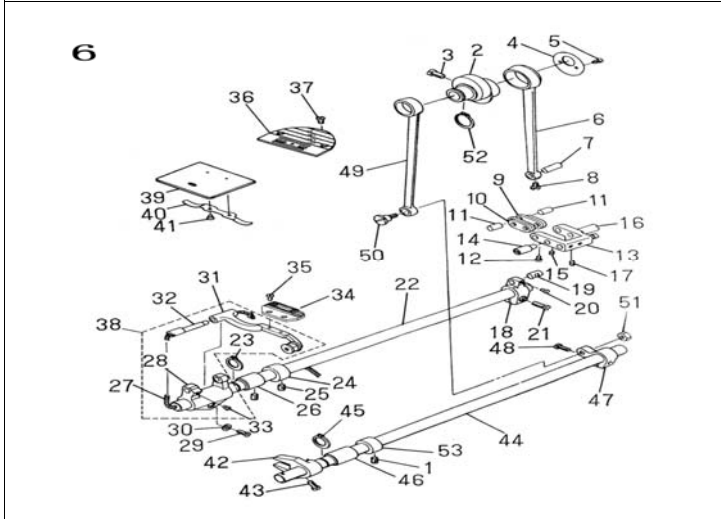


5. 钩线分组件/Hook driving shaft components

序号NO.	图号Part No.	名称Part Name	Description	件数Num.	
				M	H
1	10118504	旋梭 (广濑)	Hook asm	1	
	10118505	厚料旋梭	Hook asm		1
	10818001	大旋梭 (609旋梭) 厚料 (德)	Hook asm		1
	10118001	国产旋梭	Hook asm	1	
2	10118501	梭壳 (广濑)	Bobbin case asm	1	1
	10118002	梭壳 (国产)	Bobbin case asm	1	1
	10818502	609梭壳	Bobbin case asm		1
3	10118003	梭心	Bobbin	1	1
	10818501	609大梭心	Bobbin	1	1
4	10425004	上轴伞齿轮 (大)	Gear asm.	1	1
5	10112016	旋梭定位钩	Positioning finger	1	
	10112032	旋梭定位钩	Positioning finger		1
6	101S11011	螺钉SM11/64"×40 L=9.5	Screw SM11/64"×40 L=9.5	1	1
7	10102006	下轴	Hook driving shaft	1	1
	12202003	609下轴	Hook driving shaft		1
8	101S30005	螺钉SM3/16"×32 L=13	Screw SM3/16"×32 L=13	1	1
9	10123003	下轴限油芯	Oil wick	1	1
10	10122015	下轴油封	Thrust collar	1	1
11	1010301300	下轴前轴套分部件	Bushing asm. front	1	1
12	10403012	下轴后轴套	Bushing, rear	1	1
13	101S15006	螺钉SM15/64"×28 L=7	Screw SM15/64"×28 L=7	1	1
14	10108002	下轴挡圈	Thrust collar asm.	1	1
15	101S11012	螺钉SM11/64"×40 L=4.8	Screw SM11/64"×40 L=4.8	2	2
16	10425001	下轴伞齿轮 (小)	Pinion asm.	1	1
17	101S15007	螺钉SM1/4"×40 L=8	Screw SM1/4"×40 L=8	8	8
18	10425002	竖轴下伞齿轮 (大)	Gear asm. large	1	1
19	10403013	竖轴下轴套	Upright shaft bushing, ower	1	1
20	10403014	竖轴上轴套	Bushing, upper	1	1
21	101S15006	螺钉SM15/64"×28 L=7	Screw SM15/64"×28 L=7	1	1
22	10102007	竖轴	Upright shaft	1	1
23	10425003	竖轴上伞齿轮 (小)	Pinion asm.	1	1

# JACK

## Ordinary lockstitch and JK-9100B Parts book

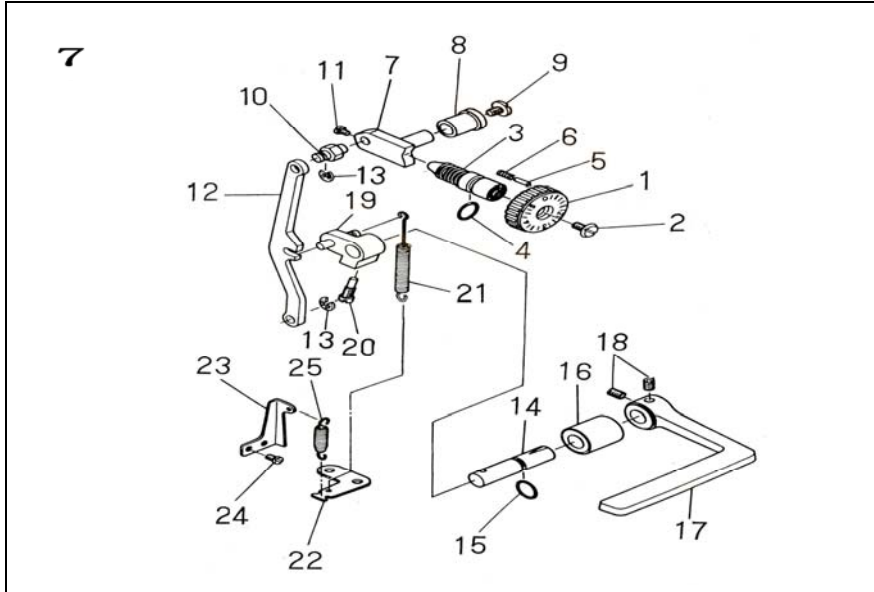


6. 送料分组件/Feed mechanism components

序号NO.	图号Part No.	名称Part Name	Description	件数Num.	
				M	H
1	01S12002	螺钉SM1/4"×40 L=6	Screw SM1/4"×40 L=6	2	2
	400958	送料偏心轮	Feed drive eccentric cam	1	1
2	400958	JK-608/609送料偏心轮	Feed drive eccentric cam	1	1
	0810001	JK-609送料偏心轮	Feed drive eccentric cam	1	1
3	01S11013	螺钉SM1/4"×40 L=13	Screw SM1/4"×40 L=13	2	2
	0112017	送料偏心轮盖板	Thrust collar	1	1
4	0812002	6090送料偏心轮盖板	Thrust collar	1	1
5	01S11005	螺钉SM9/64"×40 L=6	Screw SM9/64"×40 L=6	2	2
	400991	送料连杆	Rocker shaft connecting rod	1	1
6	400993	608/609送料连杆	Rocker shaft connecting rod	1	1
	0805002	6090送料连杆	Rocker shaft connecting rod	1	1
7	0126006	送料连杆销	Walking foot pin	1	1
8	01S11005	螺钉SM9/64"×40 L=6	Screw SM9/64"×40 L=6	1	1
9	400003	送料长摆板	Walking foot link	2	2
10	400004	送料短摆板	Connecting link	2	2
11	0126007	短摆板连接销	Walking foot pin	2	2
12	01S11005	螺钉SM9/64"×40 L=6	Screw SM9/64"×40 L=6	2	2
13	01010200	送料摆板调节零件	Walking foot adjusting link	1	1
	080100200	6090送料摆板调节零件	Walking foot adjusting link	1	1
14	0126009	送料摆板调节轴	Adjusting link fulcrum shaft	1	1
15	01S15010	螺钉SM15/64"×28 L=10.5	Screw SM15/64"×28 L=10.5	1	1
16	0126010	送料摆板调节轴	Adjusting link fulcrum shaft	1	1
17	01S15010	螺钉SM15/64"×28 L=10.5	Screw SM15/64"×28 L=10.5	1	1
	0104002	送料曲柄	Feed rocker shaft crank asm	1	1
18	12204003	608/609送料曲柄	Feed rocker shaft crank asm	1	1
	0804006	6090送料曲柄	Feed rocker shaft crank asm	1	1
19	0126011	送料曲柄销	Walking foot pin	1	1
20	01S11005	螺钉SM9/64"×40 L=6	Screw SM9/64"×40 L=6	1	1
21	01S11016	螺钉SM3/16"×28 L=14	Screw SM3/16"×28 L=14	1	1
22	0102008	送料轴	Feed rocker shaft	1	1
23	803001	GB/T894.1-1986挡圈15	Retaining ring	1	1
24	0108003	送料轴挡圈	Thrust collar asm.	1	1
25	01S15002	螺钉SM1/4"×40 L=6	Screw SM1/4"×40 L=6	2	2
26	0403015	送料轴前轴套	Feed rocker shaft bushing	1	1
27	0423005	送料轴油线	Oil wick	2	2
28	0101003	牙架座	Feed rocker asm.	1	1
29	01S11016	牙架座螺钉SM3/16"×28 L=14	Screw SM3/16"×28 L=14	1	1
30	0128003	牙架座螺钉垫圈	Washer	1	1
31	0107001	牙架	Feed bar asm.	1	1
32	0128013	牙架销	Feed bar shaft	1	1
33	01S11025	螺钉SM11/64"×40 L=7	Screw SM11/64"×40 L=7	1	1
	01114001	送料牙	Feed dog	1	1
34	01S14001	送料牙	Feed dog	1	1
	0814001	6090送料牙	Feed dog	1	1
	0114004	(E-1)送料牙	Feed dog	1	1
35	01S11018	螺钉SM1/8"×44 L=6	Screw SM1/8"×44 L=6	2	2
	0115001	针板	Throat plate	1	1
36	01S15001	针板	Throat plate	1	1
	0815001	JK-6090针板	Throat plate	1	1
	0115005	(E-1)针板	Throat plate	1	1
37	01S17002	螺钉SM11/64"×40 L=6.4	Screw SM11/64"×40 L=6.4	2	2
	400672	牙架座组件	Feed bar asm.	1	1
38	400689	送利B牙架座组件	Feed bar asm.	1	1
39	0115002	推板	Slide plate	1	1
40	0127009	推板簧	Bed slide spring	1	1
41	01S11019	螺钉SM3/32"×56 L=2	Screw SM3/32"×56 L=2	2	2
42	0104003	拾牙叉形曲柄	Driving shaft crank asm.front	1	1
	0804003	6090拾牙叉形曲柄	Driving shaft crank asm.front	1	1
43	01S11020	螺钉SM11/64"×40 L=10.5	Screw SM11/64"×40 L=10.5	1	1
44	1120201	拾牙轴	Feed driving shaft	1	1
45	803001	GB/T894.1-1986挡圈15	Retaining ring	1	1
46	0403015	拾牙轴前轴套	Feed rocker shaft bushing	1	1
47	0104004	拾牙后曲柄	Rear crank asm.	1	1
48	01S11016	螺钉SM3/16"×28 L=14	Screw SM3/16"×28 L=14	1	1
49	400093	拾牙连杆	Connecting rod	1	1
50	01S20005	拾牙连杆轴位螺钉SM9/32"×28	Hinge screw SM9/32"×28 L=13.5	1	1
51	01S16003	螺母SM9/32"×28 L=4	Nut SM9/32"×28 L=4	1	1
52	803002	GB/T894.1-1986挡圈20	Snap ring	1	1
53	0108003	拾牙轴挡圈	Thrust collar asm.	1	1

# JACK

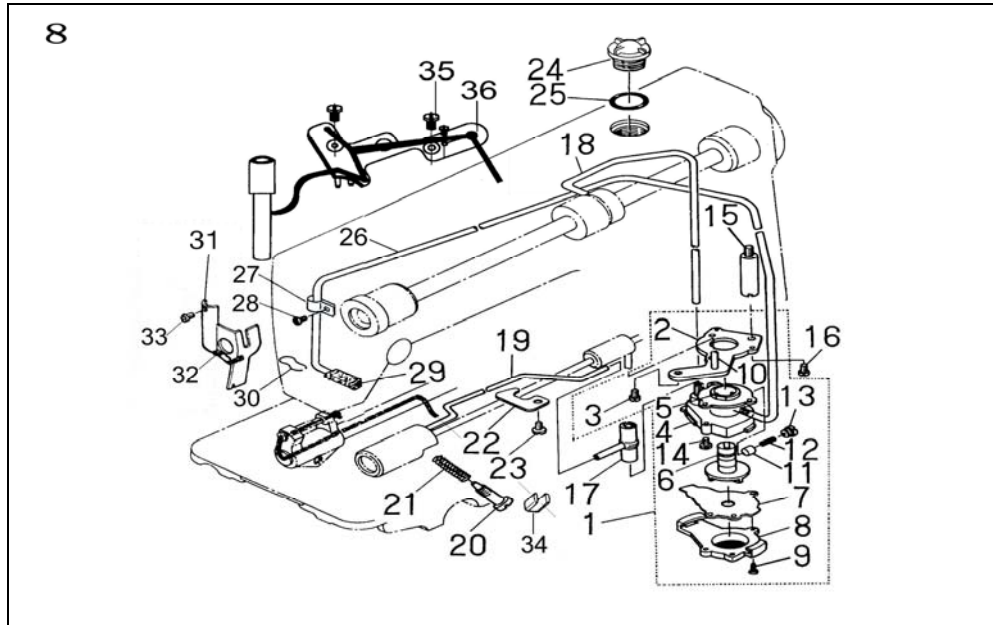
## Ordinary lockstitch and JK-9100B Parts book



序号NO.	图号Part No.	名称Part Name	Description	件数Num.	
				M	H
1	10111002	送料距旋钮	Feed dial	1	1
	12211001	608/609送料距旋钮	Feed dial		1
	10811001	6090送料距旋钮	Feed dial	1	
	10111021	8800送料距旋钮	Feed dial	1	
	10111025	迅利IB送料距旋钮	Feed dial	1	1
	101S11022	螺钉SM3/16"×28 L=18	Screw SM3/16"×28 L=18	1	1
2	10126014	送料调节螺钉	Feed regulator screw	1	1
	10426006	6090送料调节螺钉	Feed regulator screw	1	
	11426019	迅利IB送料调节螺钉	Feed regulator screw	1	1
4	10122016	送料调节螺钉O形圈	Rubber ring	1	1
5	10126015	送料距锁合销	Pin	1	1
6	10127010	送料距锁合簧	Spring	1	1
7	10101004	送料调节器	Feed regulator	1	1
8	10801001	6090送料调节器	Feed regulator	1	
	11401015	迅利IB送料调节器	Feed regulator	1	1
	10403017	送料调节器轴套	Feed regulator bushing	1	1
9	101S11023	螺钉SM3/16"×28 L=6.5	Screw SM3/16"×28 L=6.5	1	1
10	10126016	倒送料连杆销	Feed regulator pin	1	1
	10826001	6090倒送料连杆销	Feed regulator pin	1	
	11426021	迅利IB倒送料连杆销	Feed regulator pin	1	1
11	101S11005	螺钉SM9/64"×40 L=6	Screw SM9/64"×40 L=6	2	2
	10105005	倒送料连杆	Feed regulator connecting rod	1	1
12	12212003	608/609倒送料连杆	Feed regulator connecting rod		1
	10805001	6090倒送料连杆	Feed regulator connecting rod	1	
	10105007	迅利IB倒送料连杆	Feed regulator connecting rod	1	1
	H05003	GB/T896-1986挡圈5	Snap ring	2	2
14	10102010	倒送料轴	Feed reverse shaft	1	1
	10102023	迅利IB倒送料轴	Feed reverse shaft	1	1
15	10122017	倒送料轴O形圈	Rubber ring	1	1
	10103021	倒送料轴轴套	Feed lever metal	1	1
16	10103024	迅利IB倒送料轴轴套	Feed lever metal	1	1
	300208	倒送料扳手	Reverse feed control lever	1	1
	302267	迅利IB倒送料扳手	Reverse feed control lever	1	1
18	101S15013	螺钉SM15/64"×28 L=10	Screw SM15/64"×28 L=10	2	2
	10404005	倒送料曲柄	Feed reverse arm asm	1	1
19	1080400100	6090倒送料曲柄部件	Feed reverse arm asm	1	
	1140402700	迅利IB倒送料曲柄部件	Feed reverse arm asm	1	1
20	101S17003	螺钉SM1/4"×40 L=20	Screw SM1/4"×40 L=20	1	1
21	10127011	倒送料拉簧	Feed reverse spring	1	1
	10827001	6090倒送料拉簧	Feed reverse spring	1	
	12227002	608/609倒送料拉簧	Feed reverse spring		1
22	11412081	拉簧固定板	Feed spring hook	1	1
	10812001	6090拉簧固定板	Feed spring hook		1
23	11412070	摆动板复位板	Adjusting link spring guide	1	1
24	101S11025	螺钉SM11/64"×40 L=7	Screw SM11/64"×40 L=7	2	2
	10127012	摆动板复位簧	Adjusting link spring	1	
25	12227001	摆动板复位簧	Adjusting link spring		1
	10827002	6090摆动板复位簧	Adjusting link spring	1	

# JACK

## Ordinary lockstitch and JK-9100B Parts book



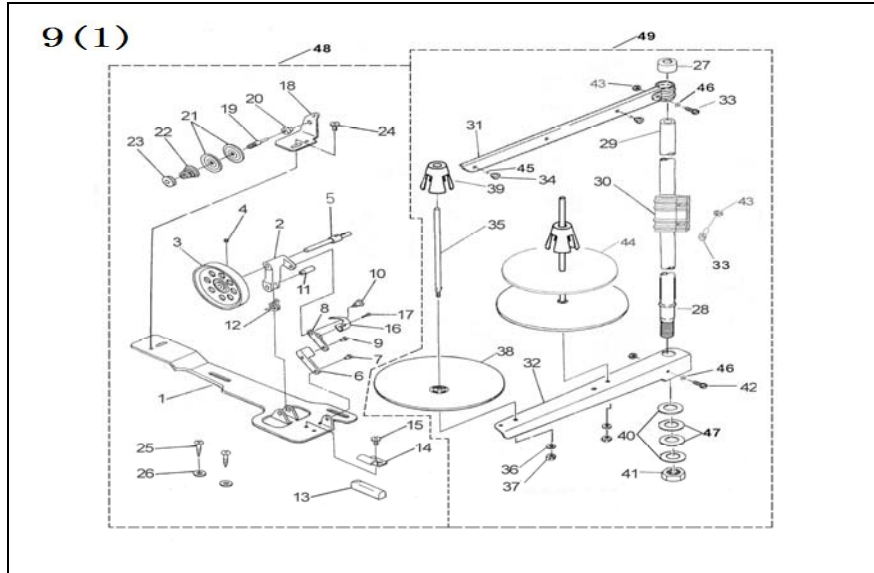
8. 润滑分组件/Lubrication components

序号NO.	图号Part No.	名称Part Name	Description	件数Num.	
				M	H
1	1012000100	油泵分部件	Lubricating oil pump asm.	1	1
2	10112020	油泵安装板	Oil pump installing base	1	1
3	101S11026	螺钉SM15/64"×28 L=9	Screw SM15/64"×28 L=9	1	1
4	10120001	油泵体	Oil pump	1	1
5	10103022	油泵体衬套	Oil pump bushing	1	1
6	10111003	油泵叶轮	Oil pump impeller	1	1
7	10112021	油泵叶轮托板	Oil pump impeller cover	1	1
8	10111007	油泵盖	Lubricating oil pump cover	1	1
9	101S30006	螺钉	Screw	1	1
10	10121001	下轴供油管	Hook driving shaft oil tube	1	1
11	10122018	回油柱塞	Plunger	1	1
12	10127013	柱塞簧	Plunger spring	1	1
13	101S30007	柱塞螺钉	Screw	1	1
14	S04009	螺钉 M3×8	Screw M3×8	3	3
15	101S30008	油泵连接螺钉SM15/64"×28	Oil pump support SM15/64"×28 L=9	1	1
16	101S11011	螺钉SM11/64"×40 L=9.5	Screw SM11/64"×40 L=9.5	1	1
17	10136001	供油管接头	Rubber joint	1	1
18	11421007	上轴供油管	Main shaft oil tube	1	1
18	11421008	迅利1B上轴供油管	Main shaft oil tube	1	1
19	10121006	旋梭供油管	Oil tube	1	1
20	101S30009	螺钉SM15/64"×28 L=29	Oil adjusting screw SM15/64"×28 L=29	1	1
21	10127014	旋梭油量调节簧	Spring	1	1
22	10112022	旋梭供油管压板	Tube holder(lower)	1	1
23	101S11026	螺钉SM15/64"×28 L=9	Screw SM15/64"×28 L=9	1	1
24	10111004	油窗	Oil sight window	1	1
25	10122019	油窗O形圈	Rubber ring	1	1
26	10121007	回油管	Oil return tube	1	1
27	10112023	回油管夹	Oil return tube holder	1	1
28	101S11004	螺钉SM3/16"×28 L=7	Screw SM3/16"×28 L=7	1	1
29	10123006	回油毡	Oil felt	1	1
30	10127015	回油毡夹	Oil felt presser	1	1
31	10412007	面部防油板	Arm oil shield	1	1
31	11412082	迅利1B面部防油板	Arm oil shield	1	1
32	10423005	防油板油线	Oil wick	1	1
33	101S11027	螺钉SM1/8"×44 L=3.4	Screw SM1/8"×44 L=3.4	1	1
34	10112053	油线夹	wick clip	1	1
35	101S11010	螺钉SM9/64"×40 L=11	Oil wick setplate screw SM9/64"×40 L=11	2	2
36	10112025	油线固定板	Oil wick setplate asm.	1	1



# JACK

## Ordinary lockstitch and JK-9100B Parts book

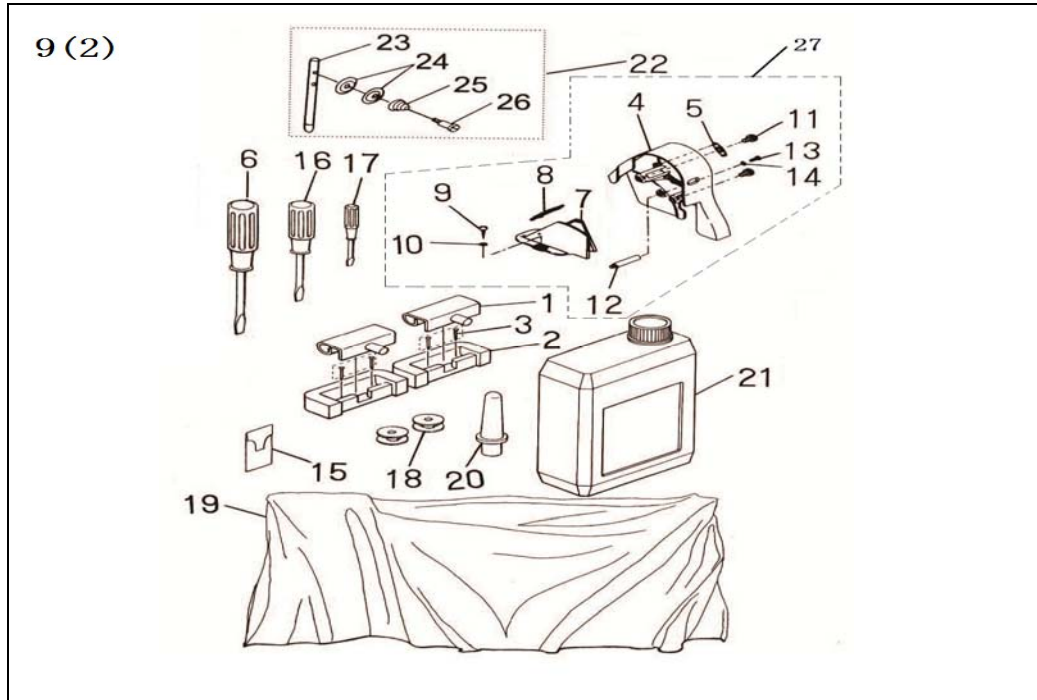


9. 机头附件(1)/Machine head accessories(1)

序号NO.	图号Part No.	名称Part Name	Description	件数Num.	
				M	H
1	10112056	绕线座	Bobbin winder base asm.	1	1
2	10101009	绕线架	Thread winder base asm.	1	1
3	10101010	绕线轮	Thread winder asm.	1	1
4	S04006	螺钉	Screw	1	1
5	10102012-1	绕线轴	Bobbin winder shaft	1	1
6	10112033	绕线座连杆	Conncting rod	1	1
7	10126018	绕线座连杆销	Conncting rod pin	1	1
8	10112034	绕线架连杆	Bobbin winder frame rod	1	1
9	10126018	绕线架连杆销	Bobbin winder frame rod pin	1	1
10	10120006	绕线架连杆轴位螺钉	Screw	1	1
11	10126019	绕线架销	Bobbin winder frame pin	1	1
12	10127017	绕线架簧	Bobbin winder frame spring	1	1
13	10122027	绕线轮制动垫	Rubber brake	1	1
14	10112035	制动垫夹	Presser plate	1	1
15	S04006	螺钉	Screw	1	1
16	10112036	满线跳板簧	Bobbin winder spring	1	1
17	S04017	过线夹螺钉	Hinge Screw	1	1
18	10112037	过线架座	Thread tension bracket asm.	1	1
19	101S30013	螺钉	Screw	1	1
20	10108005	过线夹线板档圈	Bobbin winder tension disc collar	1	1
21	10112038	过线夹线板	Tension disc	2	2
22	10127018	过线夹线簧	Tension spring	1	1
23	101S16005	螺母	Nut	1	1
24	S04006	螺钉	Screw	1	1
25	101S30014	木螺钉	Wood screw	2	2
26	10128008	垫圈	Washer	2	2
27	20131019	线架杆防护橡皮	Spool rest rod rubber cap	1	1
28	20131002	线架杆下节	Spool rest rod (lower)	1	1
29	20131001	线架杆上节	Spool rest rod (upper)	1	1
30	20131003	线架杆接头	Spool rested joint	1	1
31	10112040	上线架过线杆	Thread guide asm.	1	1
32	10112057	下线架过线杆	Thread guide asm.	1	1
33	S04050	螺钉	Screw	3	3
34	10113010	过线圈(外)	Thread guide ring	2	2
35	20131006	线盘钉	Spool pin	2	2
36	W02027	弹簧垫圈	Spring washer	2	2
37	N01034	螺母	Nut	2	2
38	20131007	线盘	Spool rest	2	2
39	20131008	线团防松垫	Spool vibration stopper	2	2
40	W01048	垫圈	Washer	2	2
41	N02004	螺母	Nut	1	1
42	S04051	螺钉	Screw	1	1
43	N01034	螺母	Nut	4	4
44	20131010	线盘垫	Spool rest cushion	2	2
45	10113011	过线圈(内)	Thread guide ring	2	2
46	W01047	垫圈	Washer	2	2
47	10122106	橡胶垫圈	Washer	2	2
48	1013100600	绕线器组件	Bobbin winder unit	1	1
	1163101600	608/609绕线器组件	Bobbin winder unit	1	1
49	1013100700	线架组件	Thread Stand Components	1	1

# JACK

## Ordinary lockstitch and JK-9100B Parts book

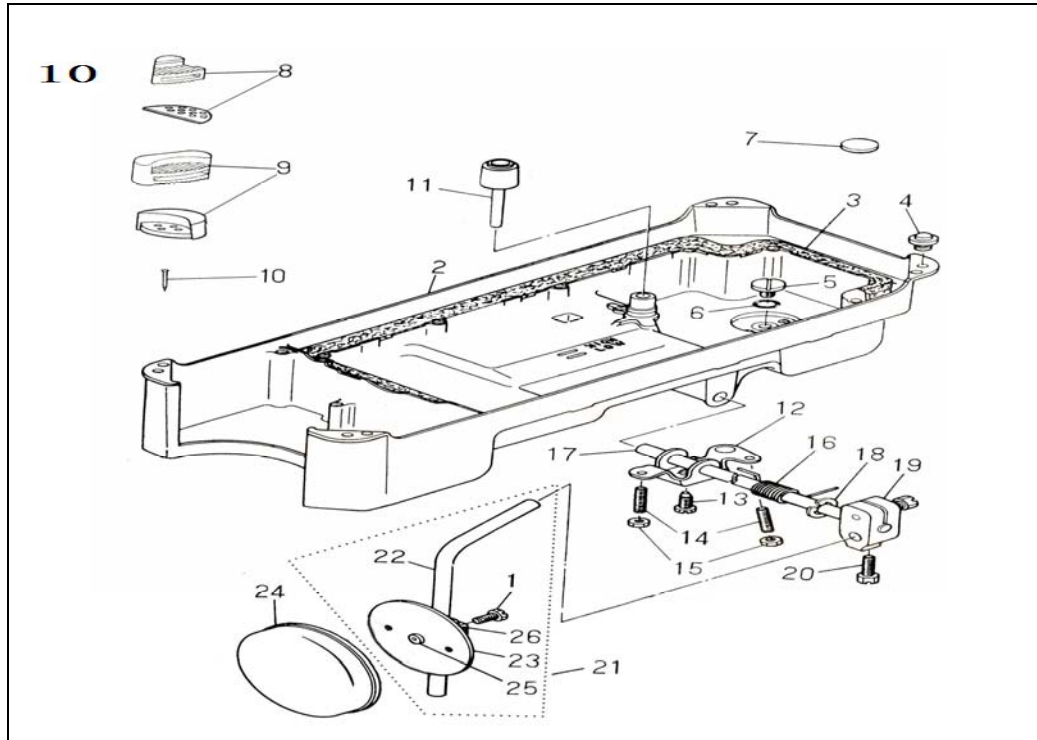


9. 机头附件(2)/Machine head accessories(2)

序号NO.	图号Part No.	名称Part Name	Description	件数Num.	
				M	H
1	1011203100	机头连接钩部件	Machine hinge plate asm.	2	2
2	10122060	机头连接钩座	Machine hinge plate	2	2
3	101S30010	机头连接钩座钉	Nail	4	4
4	10111006	上轮前罩壳	Beltcover	1	1
	10111054	8800/6090上轮前罩壳	Beltcover	1	1
	300601	608/609皮带罩上节	Beltcover	1	1
5	10111008	前罩壳安装架	Beltcover cap	1	1
6	10131002	螺丝刀(大)	Screw driver, big	1	1
7	10111009	上轮后罩壳	Beltcover	1	
	12211050	JK-608/609皮带罩下节	Beltcover		1
8	1011101000	后罩壳盖部件	Beltcover cover asm.	1	1
9	101S30011	木螺钉	Wood screw	2	2
10	10128006	垫圈	Washer	2	2
11	101S11029	前罩壳紧固螺钉SM5/16"×24	Beltcover, A screw SM5/16"×24 L=16	2	2
12	101S30012	后罩壳支柱	Beltcover support	1	1
13	101S11030	螺钉SM3/16"×28 L=14	Screw SM3/16"×28 L=14	1	1
14	10128007	垫圈	Washer	1	1
15	10117001	机针	Needle	1	1
16	10131003	螺丝刀(中)	Screw driver, mendum	1	1
17	10131004	螺丝刀(小)	Screw driver, small	1	1
18	10118003	梭心	Bobbin	2	2
	10131005	机头罩	Machine head cover	1	1
19	40131017	迅利IB机头罩	Machine head cover	1	1
	10111011	机头支柱	Machine rest pin	1	1
21	1011101200	油箱部件	Oil reservoir asm.	1	1
22	1011300700	过线器分部件	Needle thread guide pin asm.	1	1
	10112008	过线柱	Needle thread guide pin	1	1
23	11212004	迅利IB过线柱	Needle thread guide pin	1	1
	10112009	过线夹线板	Tension disc	2	2
24	10127004	过线夹线簧	Tension spring	1	1
25	101S30003	螺钉SM3/32"×56 L=10	Screw SM3/32"×56 L=10	1	1
27	10100011	皮带轮罩组件	Beltcover asm.	1	1
	10111054	8800/6090皮带轮罩组件	Beltcover asm.	1	1

# JACK

## Ordinary lockstitch and JK-9100B Parts book

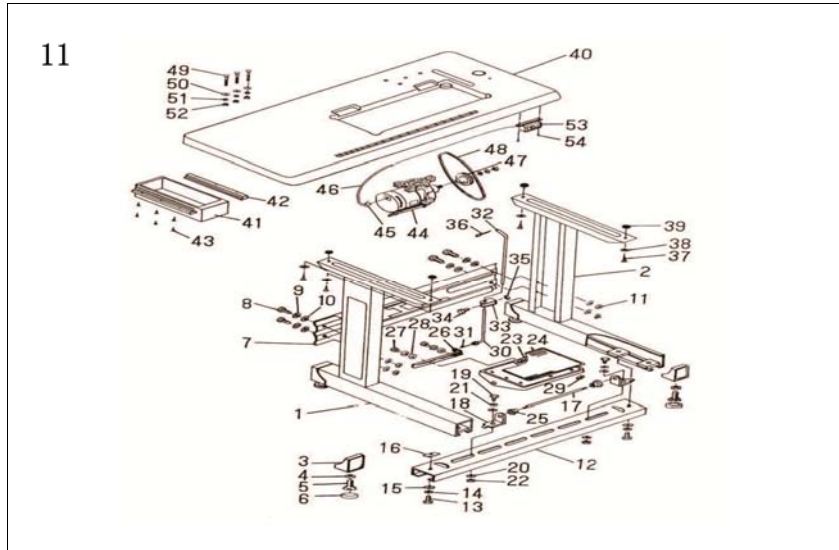


10. 油盘、膝抬压脚部分组件/Oil reservoir, Knee lifter components

序号NO.	图号Part No.	名称Part Name	Description	件数Num.	
				M	H
1	101S12004	螺钉M6 L=11	Screw M6 L=11	1	1
2	10101006	油盘	Oil reservoir	1	1
3	10122020	油盘垫	Gasket	2	2
4	10122031	机头座垫	Rubber cushion	4	4
5	101S11028	螺钉SM5/16"×24 L=7	Screw SM5/16"×24 L=7	1	1
6	10122021	O形圈	Rubber ring	1	1
7	10131001	油盘磁铁	Oil reservoir magnet	1	1
8	10122022	油盘座垫(内销)	Oil reservoir felt cushion	2	2
9	10122023	油盘支架(内销)	Oil reservoir rubber	2	2
10	101S30010	油盘座钉	Nail	4	4
11	10111005	抬压脚顶杆	Knee press lifter rod	1	1
12	10112027	抬压脚双向曲柄	Connecting rod, vertical	1	1
13	101S12002	螺钉M6 L=26	Screw M6 L=26	1	1
14	101S15012	螺钉M6 L=30	Screw M6 L=30	2	2
15	101S16004	双向曲柄限位调节螺母M6 L=	Net M6 L=4	2	2
16	10127016	双向曲柄扭簧	Spring	1	1
17	10102011	抬压脚轴	Knee press rod	1	1
18	H05010	GB/T896-1986挡圈11	Snap ring	1	1
19	10101008	抬压脚操纵杆节头	Bearing bracket	1	1
20	101S12003	螺钉M8 L=16	Screw M8 L=16	1	1
21	1011202800	操纵杆组件	Knee press plate asm.	1	1
22	10112028	操纵杆	Knee lifter plate rod	1	1
23	10112029	操纵板	Knee press plate	1	1
24	10122024	操纵板软垫	Knee press plate cover	1	1
25	10122025	操纵杆垫	Rubber	1	1
26	10112030	操纵杆节头	Knee press plate holder	1	1

# JACK

## Ordinary lockstitch and JK-9100B Parts book

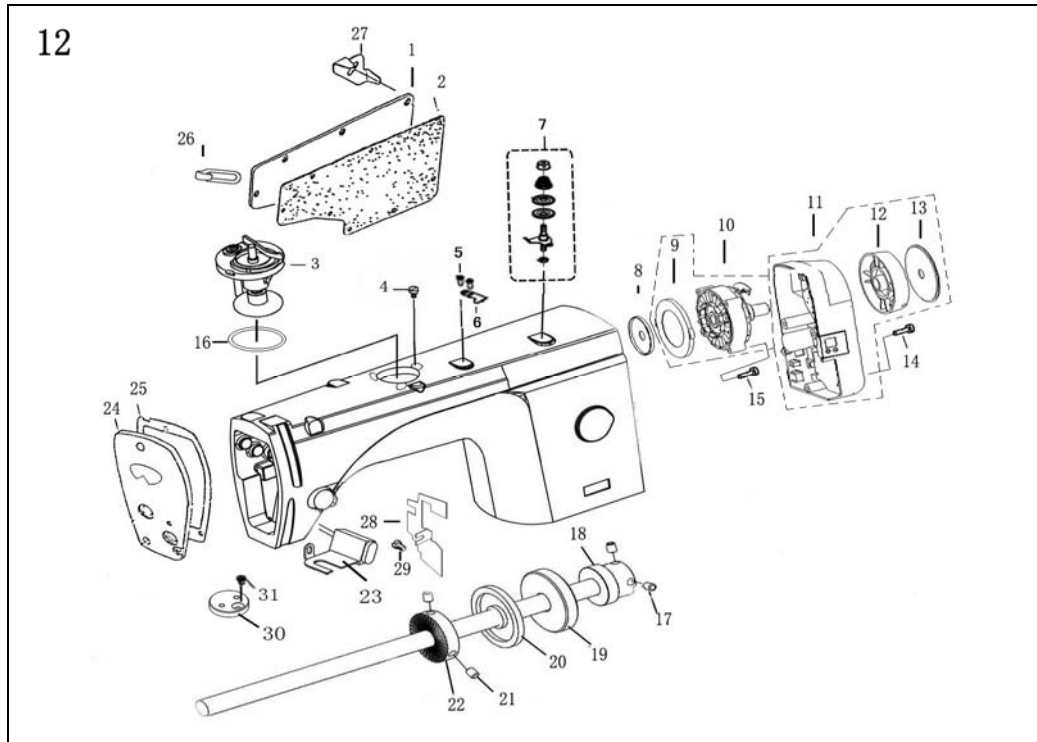


11. 机架、台板、电器分组件/Machine table electric components

序号NO.	图号Part No.	名称Part Name	Description	件数Num.	
				M	H
1	1011204200	边架部件(左)	Stand side asm.left	1	1
2	1011204300	边架部件(右)	Stand side asm.right	1	1
3	10111015	边架座套	Rubber cushion	4	4
4	N01010	螺母	Nut	4	4
5	101S30015	调节座	Screw	4	4
6	10122029	调节座橡胶	Space ring	4	4
7	10112044	横档	Stand side support	1	1
8	L02014	横档连接螺栓	Screw	4	4
9	10128011	垫圈	Spring washer	4	4
10	W01010	垫圈	Washer	8	8
11	N01011	螺母	Nut	4	4
12	10112045	踏板轴档	Treadle brace	1	1
13	L02014	踏板轴档螺栓	Screw	2	2
14	10128011	垫圈	Spring washer	2	2
15	W01010	垫圈	Washer	2	2
16	10112046	踏板轴档定位螺母板	Treadle brace locknut plate	2	2
17	10102013	踏板轴	Treadle shaft	1	1
18	10112047	踏板轴座	Treadle bravket	2	2
19	L02014	踏板轴座螺栓	Screw	2	2
20	W01010	垫圈	Washer	4	4
21	10128011	弹簧垫圈	Spring washer	2	2
22	N01011	螺母	Nut	2	2
23	10112048	踏板	Treadle	1	1
24	10122030	踏板垫	Gas Ket	1	1
25	10103023	踏板衬套	Collar	2	2
26	10112049	踏板杆	Treadle pitman	1	1
27	L02015	踏板杆螺栓	Screw	2	2
28	W01003	垫圈	Washer	4	4
29	N01012	螺母	Nut	2	2
30	10112050	下拉杆	Pitman rod,lower	1	1
31	10127019	拉杆弹簧	Spring	1	1
32	10112051	上拉杆	pitman rod,upper	1	1
33	10112052	拉杆接头	Joint	1	1
34	L02015	拉杆接头螺栓	Joint screw	1	1
35	N01012	螺母	Nut	1	1
36	10129001	上拉杆开口销	Pitman rod split pin (upper)	1	1
37	101S30016	台板木螺钉	Table Wood screw	4	4
38	10128012	垫圈	Table Wood screw washer	4	4
39	10128013	台板垫圈	Table washer	4	4
40	10132002	台板	Table	1	1
41	10111016	抽斗	Drawer	1	1
42	10111017	抽斗导轨	Drawer rail	2	2
43	101S30017	抽斗导轨木螺钉	Drawer rail wood screw	6	6
44	10133001	GFC4024型电机	Motor GFC4024 motor	1	1
45	10130002	电机接线插头	Motor connecting wire plug	1	1
46	10130003	电机接线	Motor wire	1	1
47	101S5004	电动机带轮	Motor pulley	1	1
48	101S5002	机头传动带	Machine driving belt	1	1
49	101S30018	螺钉	Screw	3	3
50	10128014	垫圈	Washer	3	3
51	10128011	弹簧垫圈	Spring washer	3	3
52	N01011	螺母	Nut	3	3
53	10130004	电源开关	Power source switch	1	1
54	101S30019	电源开关木螺钉	Power source switch wood screw	1	1

# JACK

## Ordinary lockstitch and JK-9100B Parts book



12. 迅利 I B 专用部件 / SHIRLEY I B Dedicated components

序号NO.	图号Part No.	名称Part Name	Description	件数Num.	
				M	H
1	302415	后窗板	Side plate	1	1
2	11422060	后窗板垫	Gasket	1	1
3	1143103800	绕线器组件	Bobbin winder asm.	1	1
4	114S11003	螺钉	Screw	3	3
5	114S11015	螺钉	Screw	2	2
6	11419001	割线刀	Knife	1	1
7	1141300600	底线夹线器	Thread tension asm.	1	1
8	10122105	上轴后套挡油油封	Main shaft sleeve Oil seal unit	1	1
9	10111031	绝缘罩	Insulation cover	1	1
10	10111061	电机	Motor	1	1
11	1013300300	罩壳	cover	1	1
12	10135008	上轮	Hang wheel	1	1
13	10111062	防尘盖	cover plate	1	1
14	114S30001	内六角圆柱头螺栓	socket bolt	4	4
15	114S30018	螺栓(内六角)	socket bolt	4	4
16	11422062	密封垫	Gasket	1	1
17	S10037	螺钉	Screw	4	4
18	10103073	上轴后轴承套	main shaft sleeve	1	1
19	B07042	轴承	Bearing	1	1
20	11422028	油封组件	Oil seal unit	1	1
21	114S14002	驱动轮螺钉	Driving wheel screw	2	2
22	11435013	绕线器驱动轮	Bobbin winder driving wheel	1	1
23	1013000500	LED灯组件	LED asm.	1	1
24	301511	面板	Face plate asm.	1	1
25	11422059	面板垫	Face plate gasket	1	1
26	10113004	右线钩	Arm thread guide A	1	1
27	11212043	电线压板	Cord hold	1	1
28	11415002	隔油板	oil separation tank	1	1
29	101S11033	油管压板螺钉	oil tube plate screw	1	1
30	10112002	卷边器座	Ruler stop seat	1	1
31	101S11002	卷边器座螺钉	screw	1	1